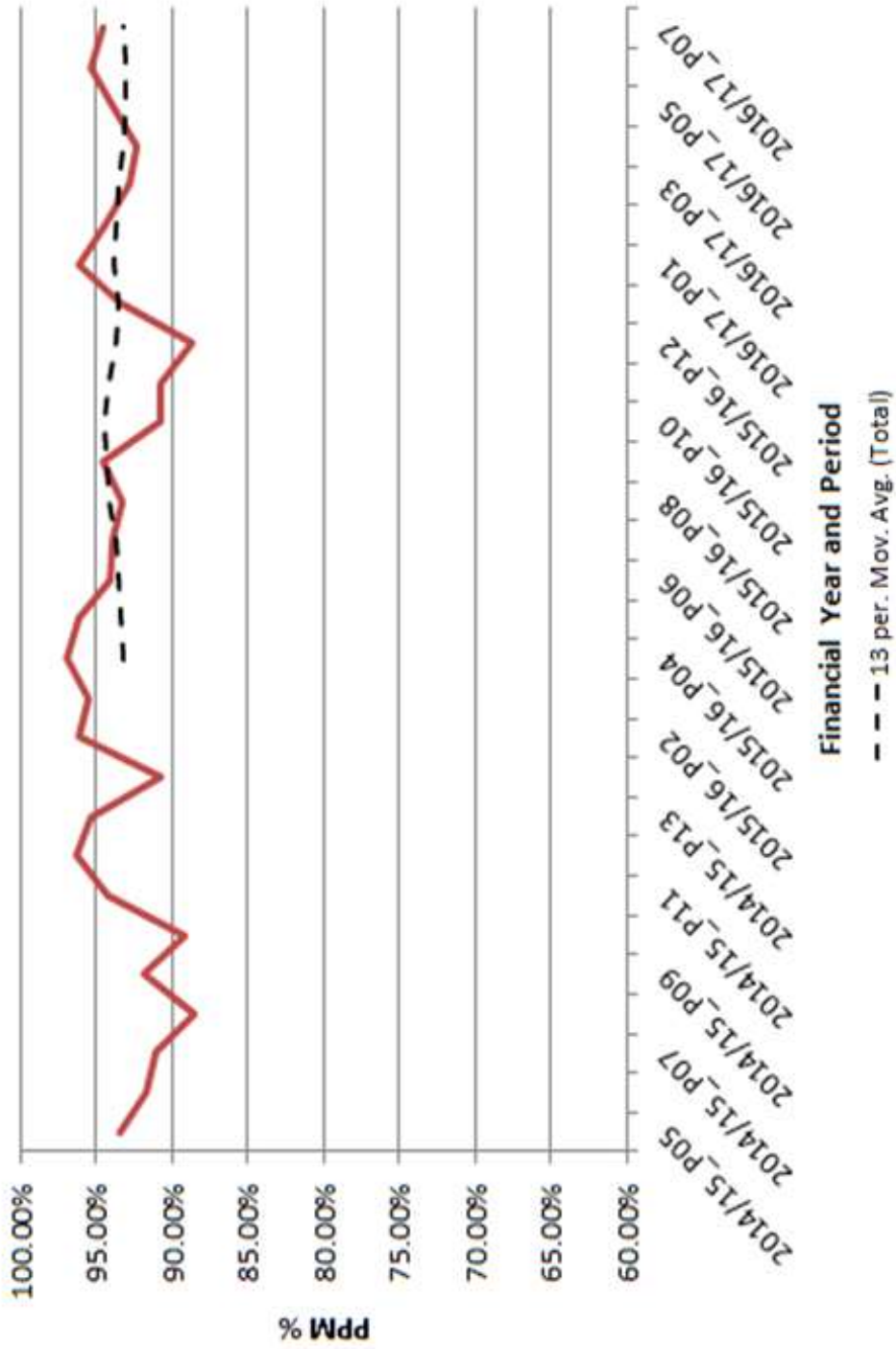


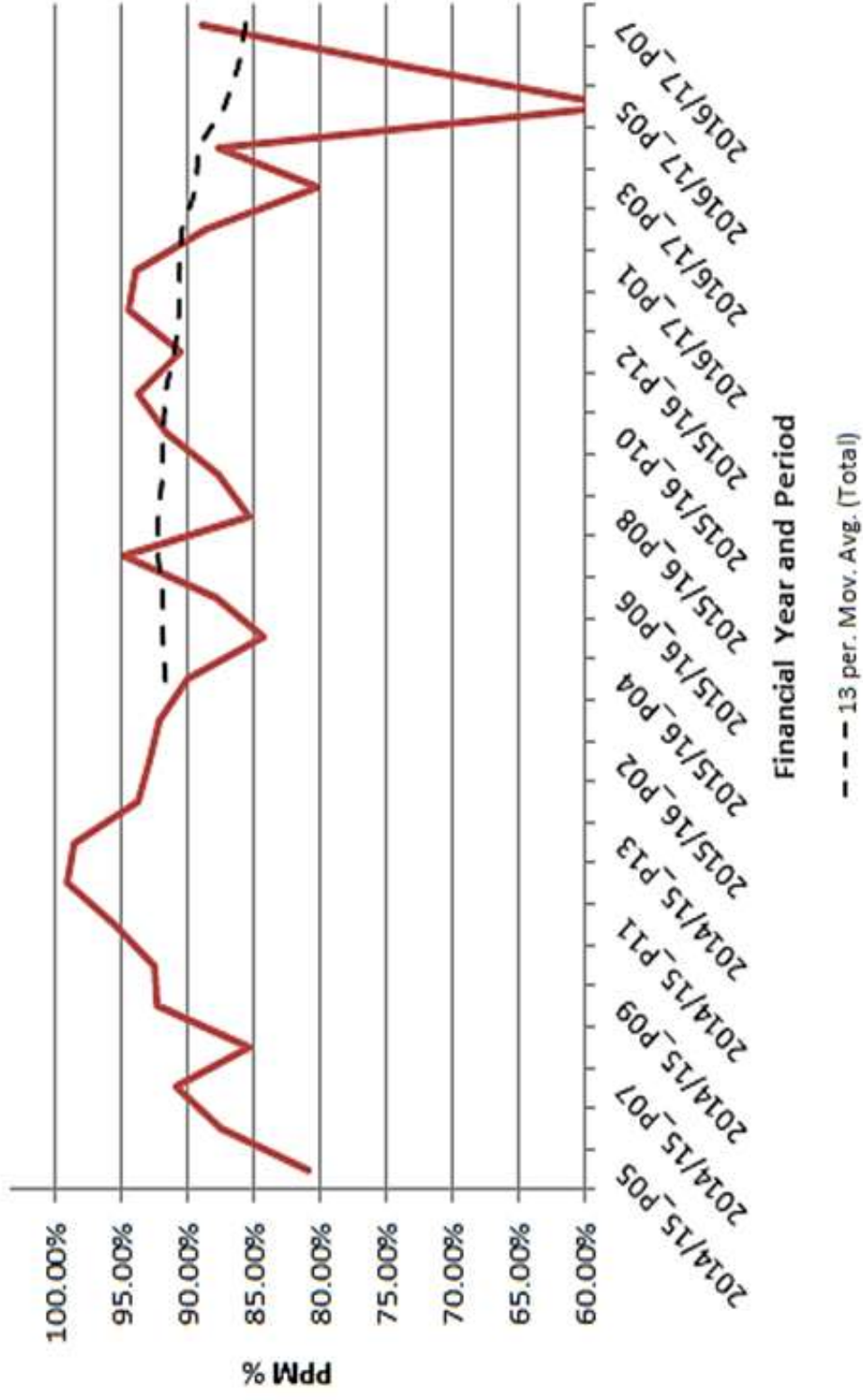
NETWORK RAIL REPORT

NOVEMBER 2016

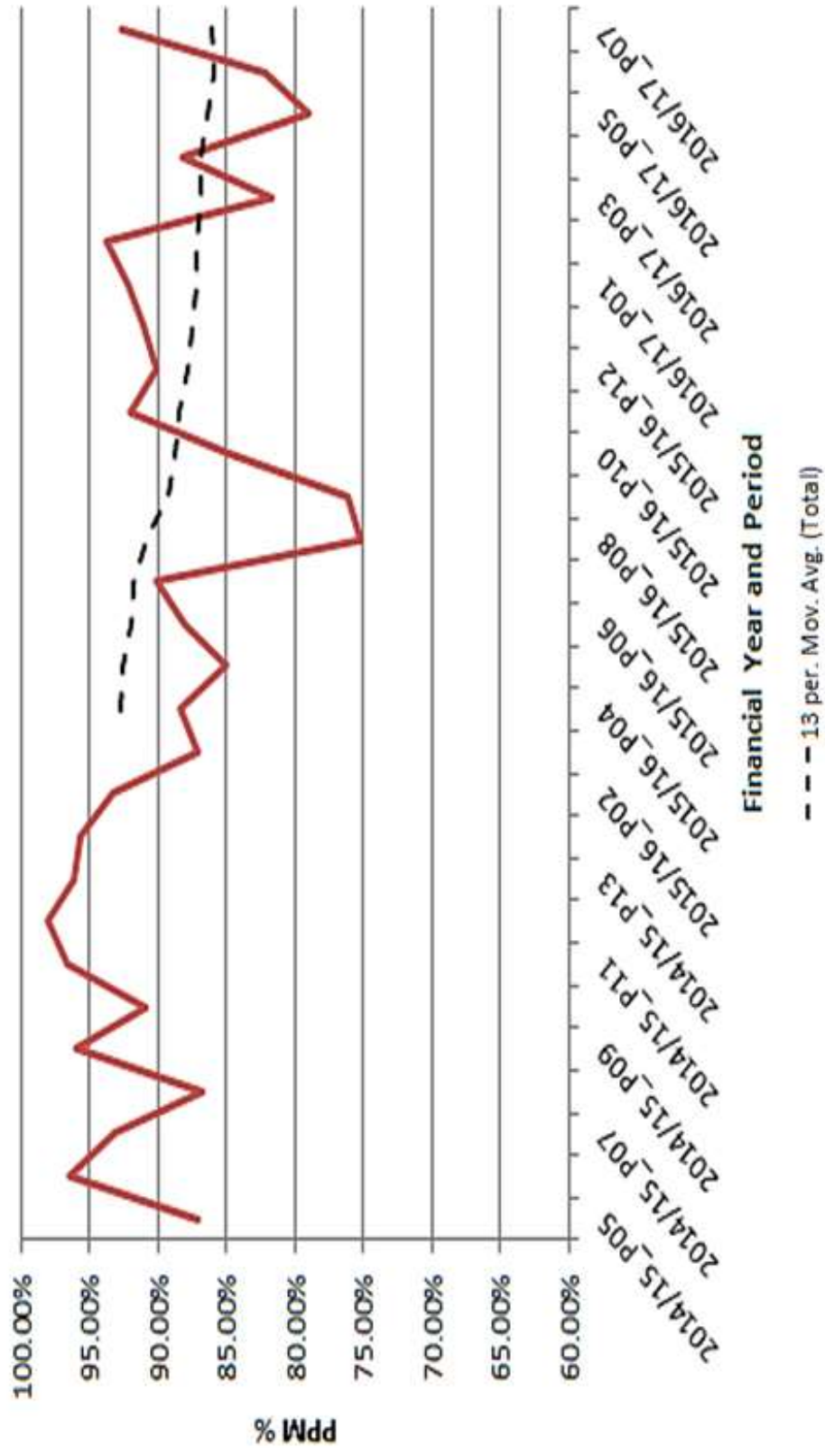
Arriva Trains Wales – 93% Target



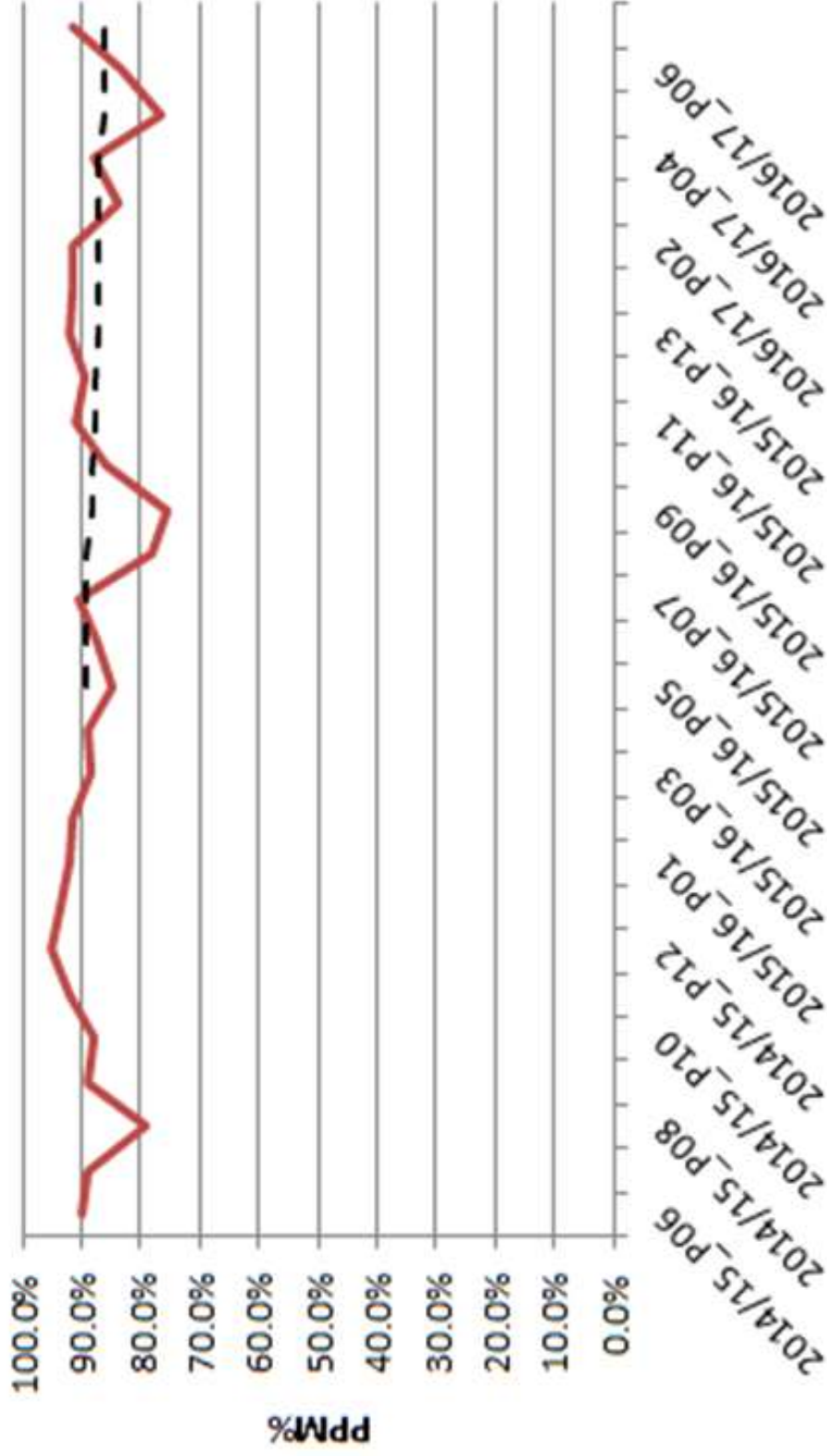
Machynlleth to Pwllheli



Aberystwyth – Birmingham



Cambrian



Financial Year and Period

-- 13 per. Mov. Avg. (Total)

Top Incidents in North Wales P6

Top 3 NR responsible incidents P6				
Incident Number	Incident Create Date	Incident Description	Delay Minutes	PPM Failures
132328	01/04/2016	TSR Barmouth to Harlech	904	46.4
148448	08/04/2016	TSR Newtown (Powys) to Caersws	285	21
421639	05/08/2016	ESR Pwllheli to Porthmadog	269	17

Top 3 ATW responsible incidents P6				
Incident Number	Incident Create Date	Incident Description	Delay Minutes	PPM Failures
461492	22/08/2016	Overtime Welshpool	319	17.3
510564	12/09/2016	Unit Defect Rockcliffe Hall to Holywell Jn	345	14.4
471179	26/08/2016	Overtime Pwllheli	204	10.6